



# Sunnyside - Bottom Flat

Sunnyside Farm, St Mary's

TR21 0NW



## Sleeps 4 | Thursday Change over

- Double and twin arrangements
- Quiet location
- Internet access
- Outside seating area
- Children over the age of eight are welcome

Sunnyside is a 19th Century granite farmhouse converted into holiday flats. The farm itself is a working farm and produces scented narcissi from October to April.

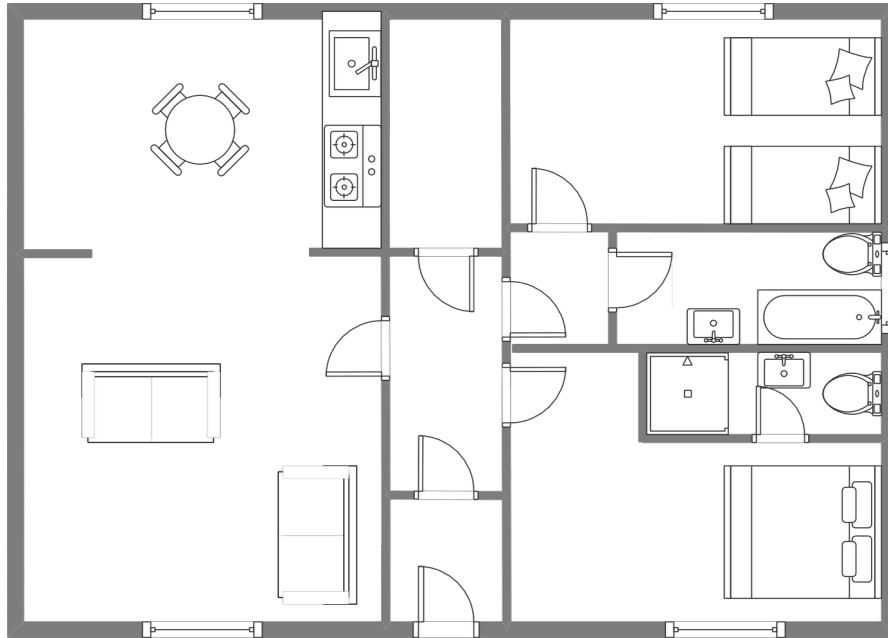
The Bottom flat is, as its name suggests, on the ground floor and has large rooms and countryside views to the south.

The accommodation sleeps four in one double en-suite with shower and one twin en-suite with bath.

The lounge includes a smart TV and the kitchen is fully equipped. There is also use of shared washing machine and tumble dryer..

Sunnyside Flats all change over on a Thursday so can be booked together for groups of up to 12 guests. The [Middle Flat](#) and [Top Flat](#) also sleep four in a double and twin arrangement..

# Layout



## Getting to the property

### Map of St Marys



### Directions from the Quay | Walking time: 20-25 minutes

Head towards the entrance to the quay Turn left at The Mermaid Inn on to Hugh Street Keep to the left side of the road Continue along Hugh Street past the park Continue past Holgates Green and out of town

Stay on the Telegraph Road for about a mile Follow it round to the left Turn left 5 towards Farmer Browns bulb shop. Sunnyside Farm Flats are located on the left hand side, a minute walk from bulb shop.

What3words:according.spines.bumps

Scilly Self Catering  
Lower Strand  
Isles of Scilly, TR21 0PS

Enquiries@scillyselfcatering.com  
01720 422082  
www.scillyselfcatering.com